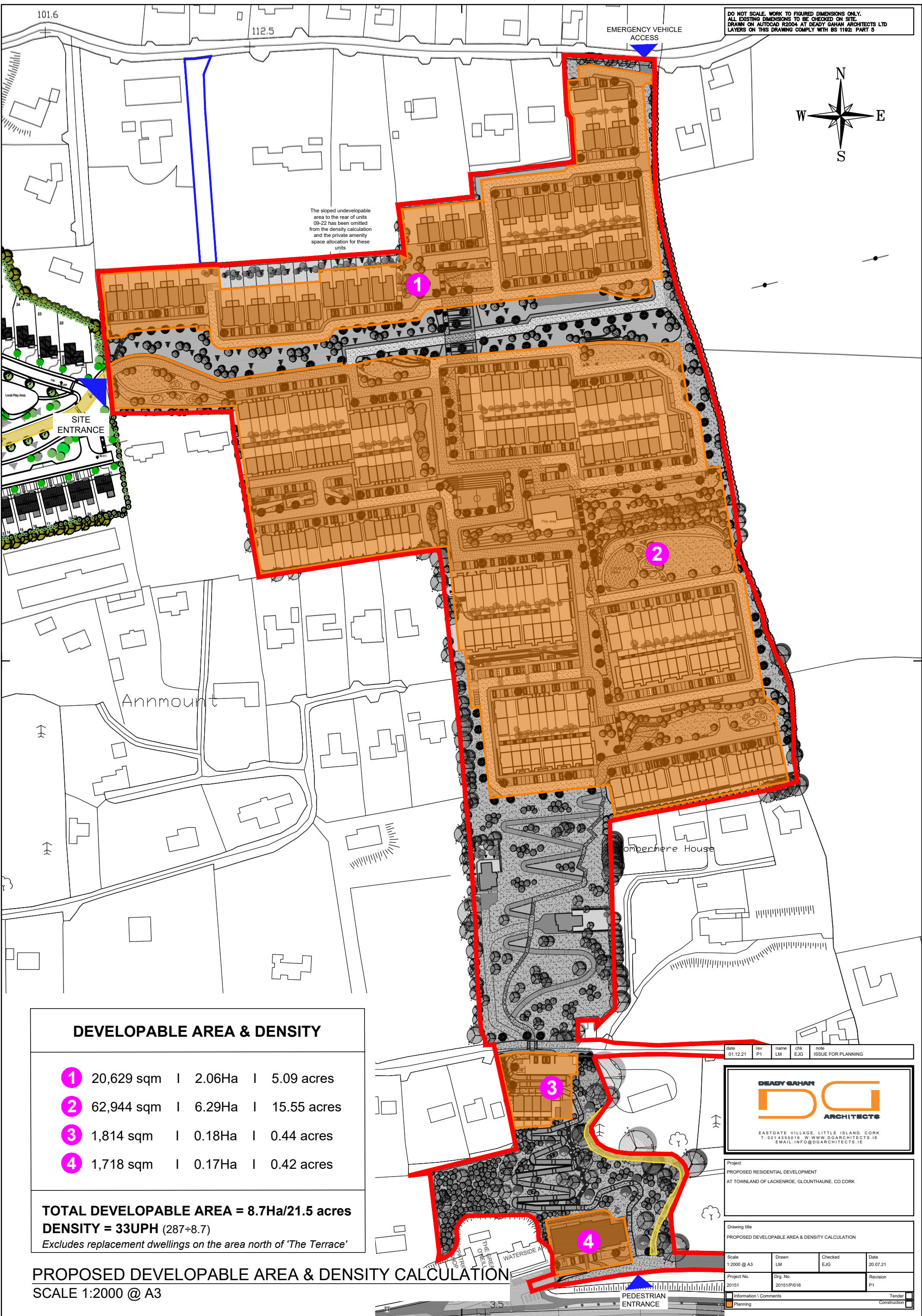
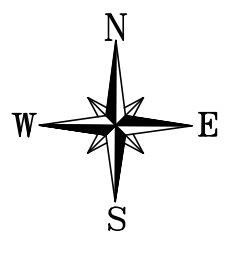


DO NOT SCALE. WORK TO FIGURED DIMENSIONS ONLY.
 ALL EXISTING DIMENSIONS TO BE CHECKED ON SITE.
 DRAWN ON AUTOCAD R2004 AT DEADY SAHAN ARCHITECTS LTD
 LAYERS ON THIS DRAWING COMPLY WITH BS 1192: PART 5



The sloped undevelopable area to the rear of units 09-22 has been omitted from the density calculation and the private amenity space allocation for these units

DEVELOPABLE AREA & DENSITY

- ① 20,629 sqm | 2.06Ha | 5.09 acres
- ② 62,944 sqm | 6.29Ha | 15.55 acres
- ③ 1,814 sqm | 0.18Ha | 0.44 acres
- ④ 1,718 sqm | 0.17Ha | 0.42 acres

TOTAL DEVELOPABLE AREA = 8.7Ha/21.5 acres
DENSITY = 33UPH (287÷8.7)
Excludes replacement dwellings on the area north of 'The Terrace'

PROPOSED DEVELOPABLE AREA & DENSITY CALCULATION
 SCALE 1:2000 @ A3

date	rev	name	chk	note
01.12.21	P1	LM	EJG	ISSUE FOR PLANNING

DEADY SAHAN ARCHITECTS

EASTGATE VILLAGE, LITTLE ISLAND, CORK
 T: 021 4355016 W: WWW.DGARCHITECTS.IE
 EMAIL: INFO@DGARCHITECTS.IE

Project:
 PROPOSED RESIDENTIAL DEVELOPMENT
 AT TOWNLAND OF LACKENROE, GLOUNTHAUNE, CO CORK

Drawing title:
 PROPOSED DEVELOPABLE AREA & DENSITY CALCULATION

Scale	Drawn	Checked	Date
1:2000 @ A3	LM	EJG	20.07.21

Project No.	Dwg. No.	Revision
20151	20151/P/016	P1

Information / Comments	Tender
<input type="checkbox"/> Information / Comments <input checked="" type="checkbox"/> Planning	<input type="checkbox"/> Tender <input type="checkbox"/> Construction